

Rodolphe Devillers

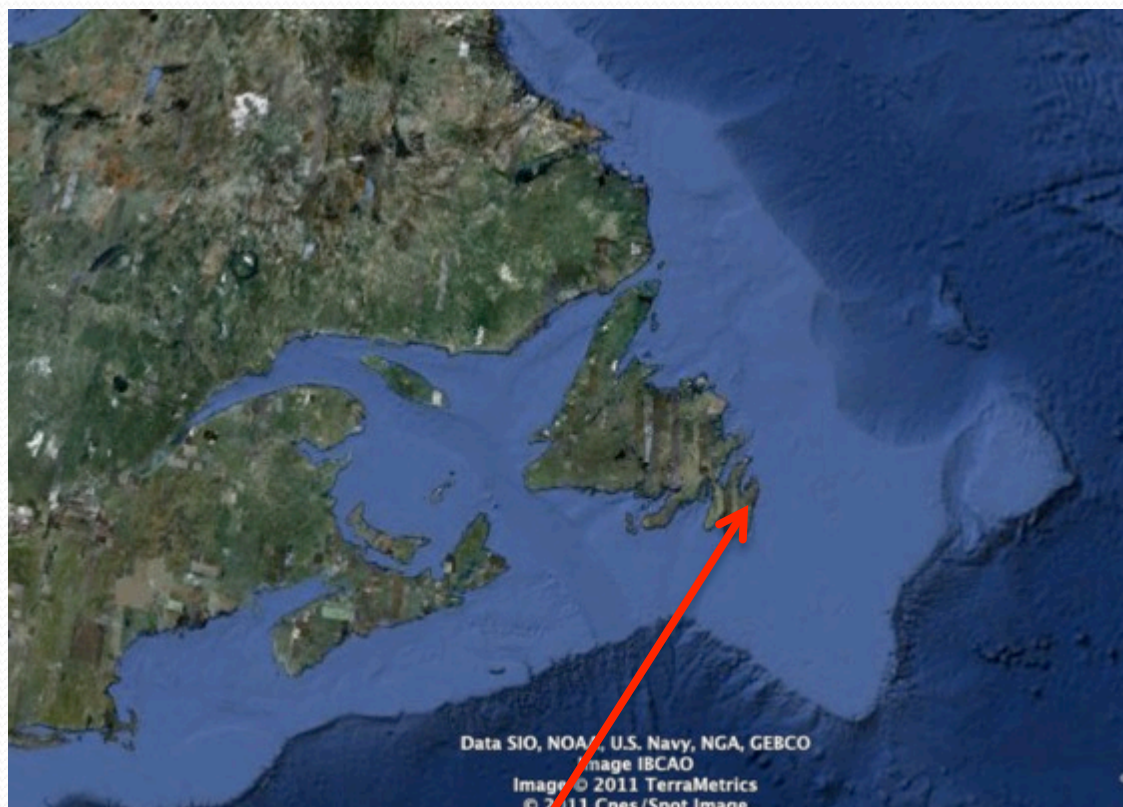
Who am I? / Qu'est-ce que
je mange en hiver?

Department of Geography
Memorial University of Newfoundland

Réseau Convergence "Who's who"



Based in Newfoundland / Chez les newfies



St. John's, NL



Academic background

- BSc in Earth Sciences (U. Lyon 1, France)
- MSc in Earth Sciences (University of Quebec in Montreal)
- MSc in Geomatics (U. Laval) - 2001
- PhD in Geomatics (U. Laval) - 2004
- Post-doc at the Centre for Topographic Information of Sherbrooke (NRCan) - 2005

Multidisciplinary research/lab

Geography (MUN)

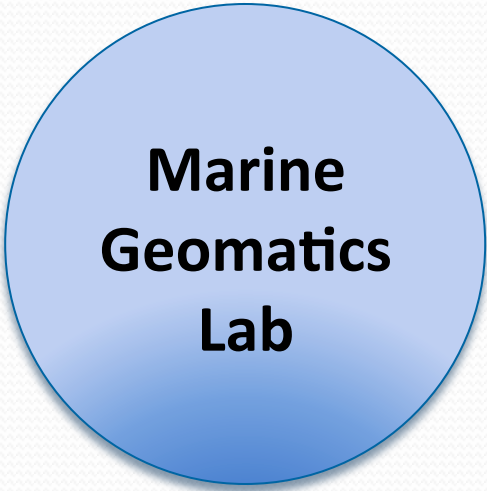
- GISciences/ Spatial Analysis
- Geovisualization

Biology (Laval)

- Marine ecology
 - Fisheries
- Conservation Biology

Geomatics (Laval)

- GIS/Engineering
- Hydrography



Marine Geomatics Lab

Computer Science (MUN)

- Information Visualization
- Artificial Intelligence

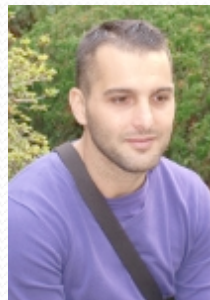
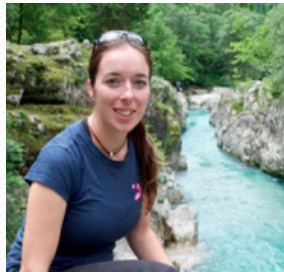
Geology (MUN)

- Marine geology
- Marine acoustics

Engineering

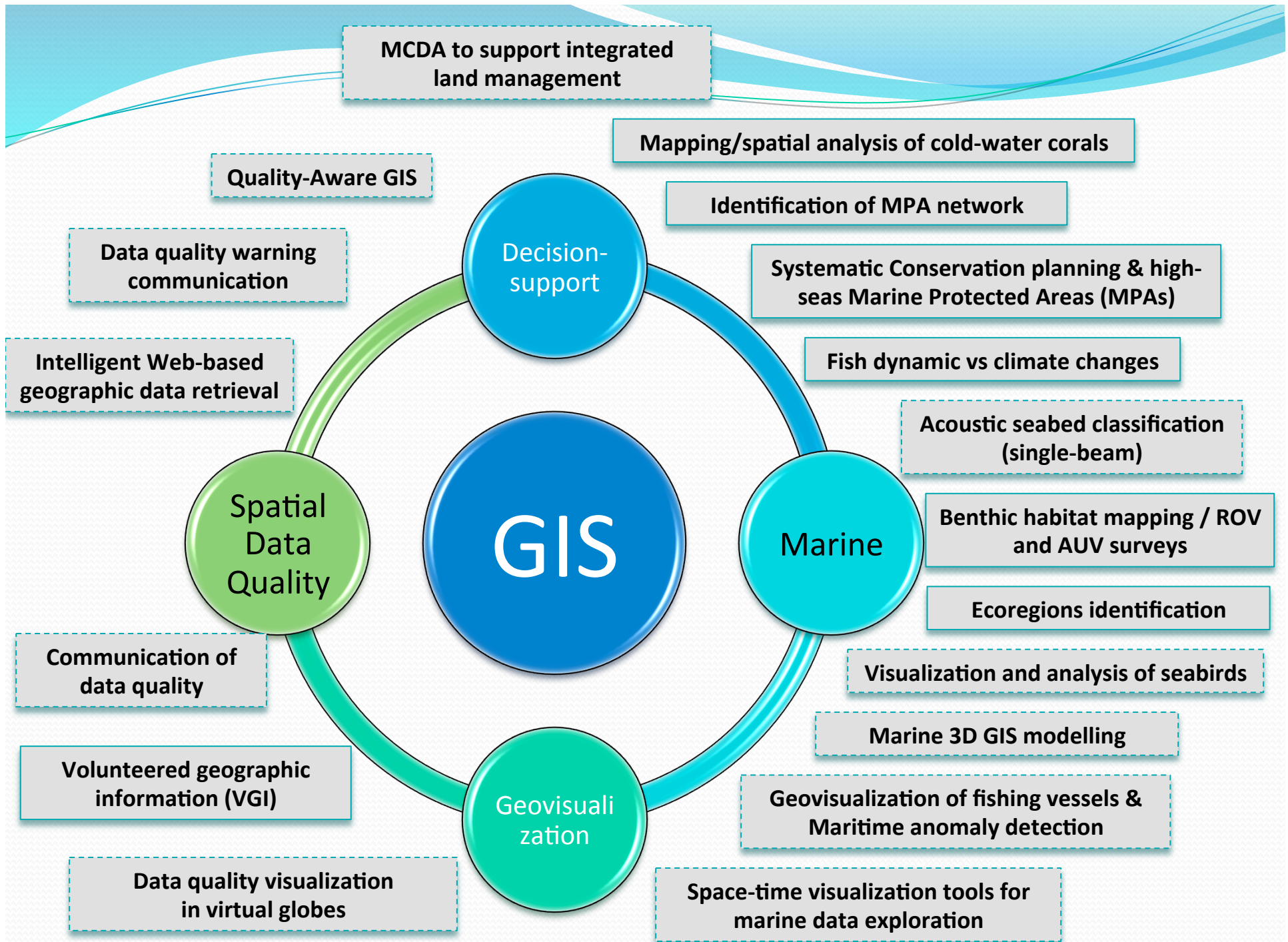
- Ocean technologies

Marine Geomatics Lab



<http://www.marinegis.com>

- Members:
 - 1 post-doc
 - 1 research professional
 - 7 PhD students
 - 6 MSc students



MCDA to support integrated land management

Mapping/spatial analysis of cold-water corals

Quality-Aware GIS

Identification of MPA network

Data quality warning communication

Systematic Conservation planning & high-seas Marine Protected Areas (MPAs)

Intelligent Web-based geographic data retrieval

Fish dynamic vs climate changes

Acoustic seabed classification (single-beam)

Spatial Data Quality

GIS

Marine

Benthic habitat mapping / ROV and AUV surveys

Ecoregions identification

Communication of data quality

Visualization and analysis of seabirds

Volunteered geographic information (VGI)

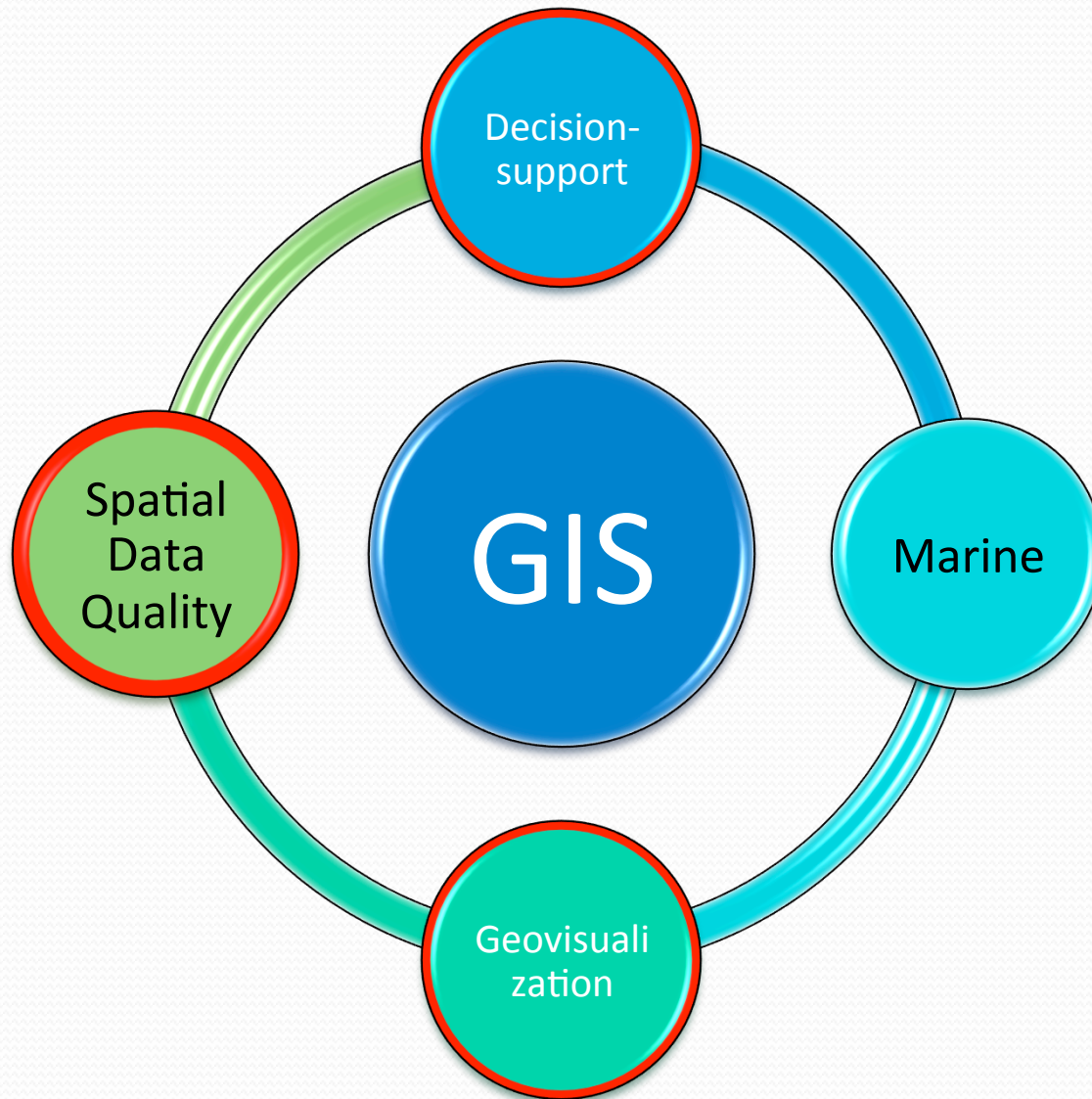
Marine 3D GIS modelling

Geovisualization

Geovisualization of fishing vessels & Maritime anomaly detection

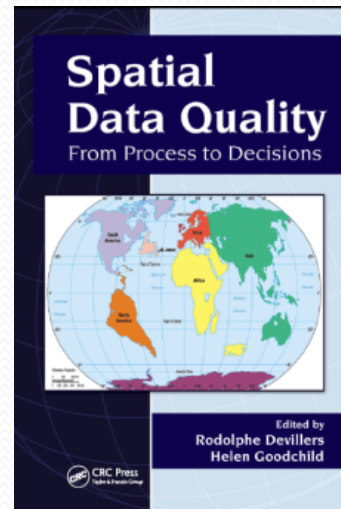
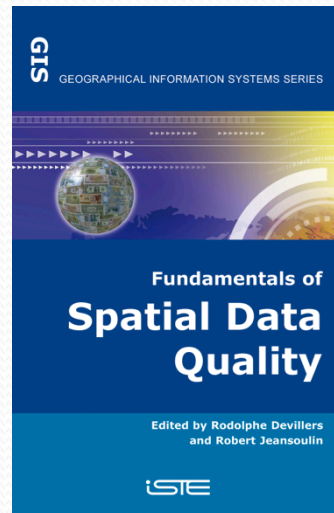
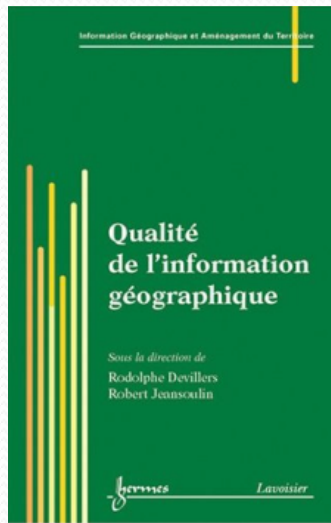
Data quality visualization in virtual globes

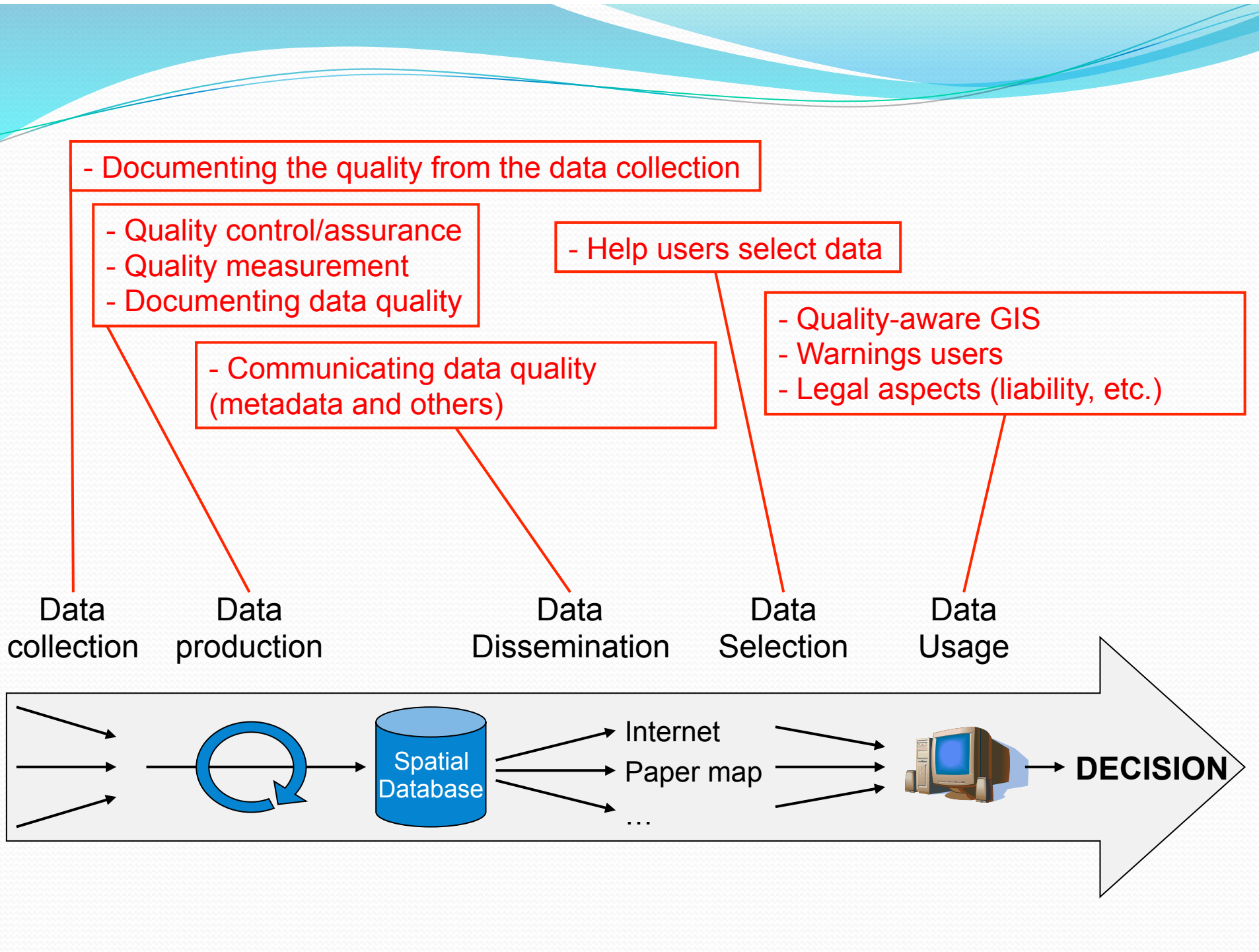
Space-time visualization tools for marine data exploration



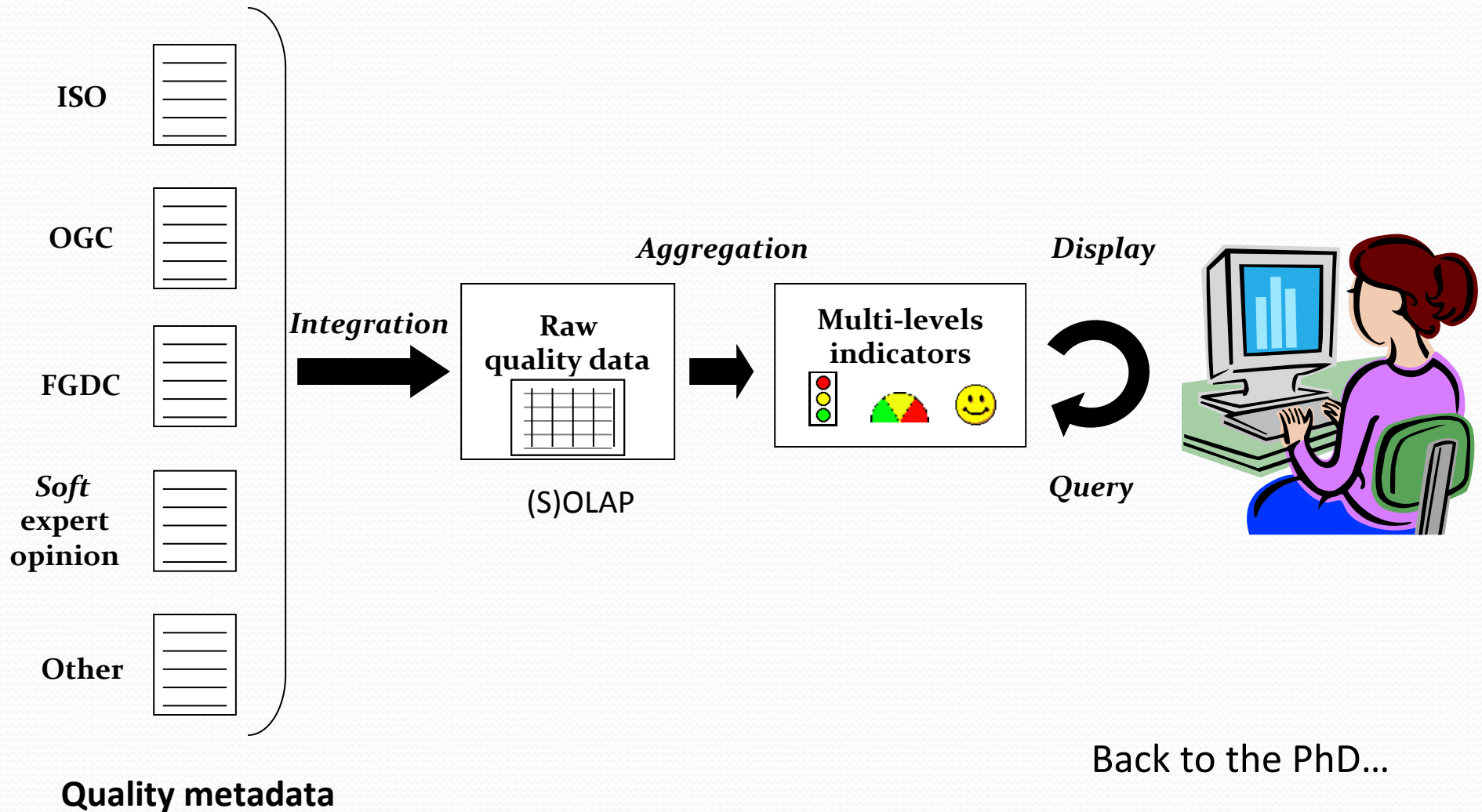
Spatial data quality

- Visualization/Communication of spatial data quality information
- Management of quality information, standards, metadata





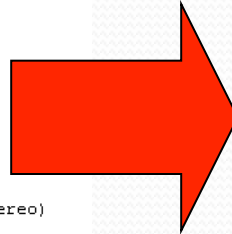
Better communication of SDQ



Better communication of SDQ

```
021e05.met - WordPad
File Edit View Insert Format Help
[Icons]
!
BEGIN          POLYGON_SECTION
NB_POLYGONS    3
BEGIN          POLYGON
ID_POLYGON     0001
COORDINATES    303820 5013763 284203 5014402 264585 5015101 265621 5042875
COORDINATES    285152 5042175 304683 5041536 303820 5013763
ENTITIES       P 1-1849,1856-2047
ENTITIES       L 1-1809,1825-2047
ENTITIES       S 1-1829,1834-2047
SOURCE_TYPE    CT+PHA (Aerial photography with field completion)
SOURCE_NAME    PHOTOS.RNCAN
VALID_DATE     1985/-1
PLAN_ACCU_QUAL E (Estimated)
PLAN_ACCURACY  10
ALTI_ACCU_QUAL E (Estimated)
ALTI_ACCURACY  5
ACTION         ACQ.COMP.STER (Complete acquisition of entities by stereo)
IMPACT_ACT_C   S (Systematic)
IMPACT_ACT_P   N (No)
POL_ED_VER     3.00
COMMENT
END            POLYGON
!
BEGIN          POLYGON
ID_POLYGON     0002
```

Metadata



QUALITY DASHBOARD

Global quality indicator

1870

Completeness Logical Consist Positional Accur

Temporal Accur Thematic Accur Up to date

Explore

Map Quality: Up to date

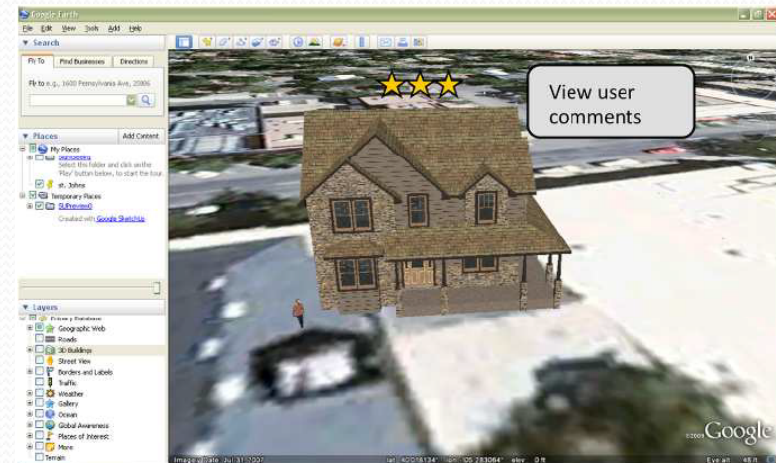
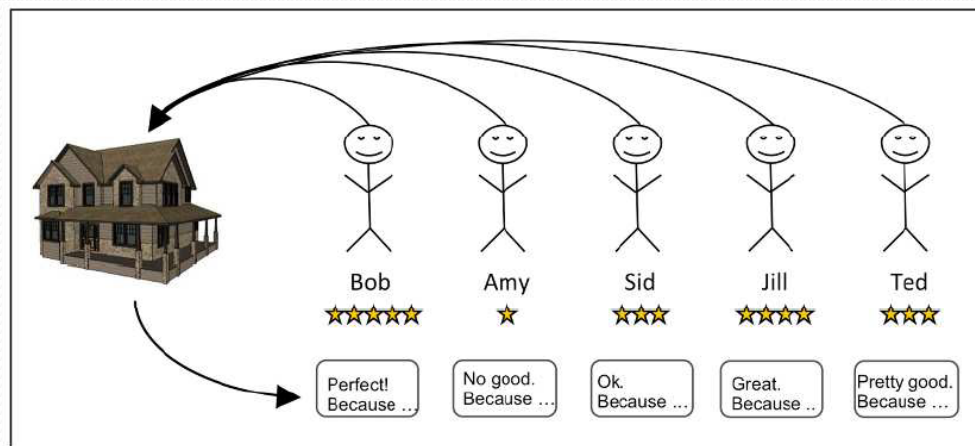
Risk Tolerance: Average

Legend: Map Quality (Poor, Average)

Spatial Data Quality Information System

Quality visualization in Virtual Globes

- Recommender system for 3D objects based on five-star visualization



- Jones, K., Devillers, R., Bédard, Y. and Schroth, O. 2013. **Visualizing perceived spatial data quality of 3D objects within virtual globes.** *International Journal of Digital Earth.*

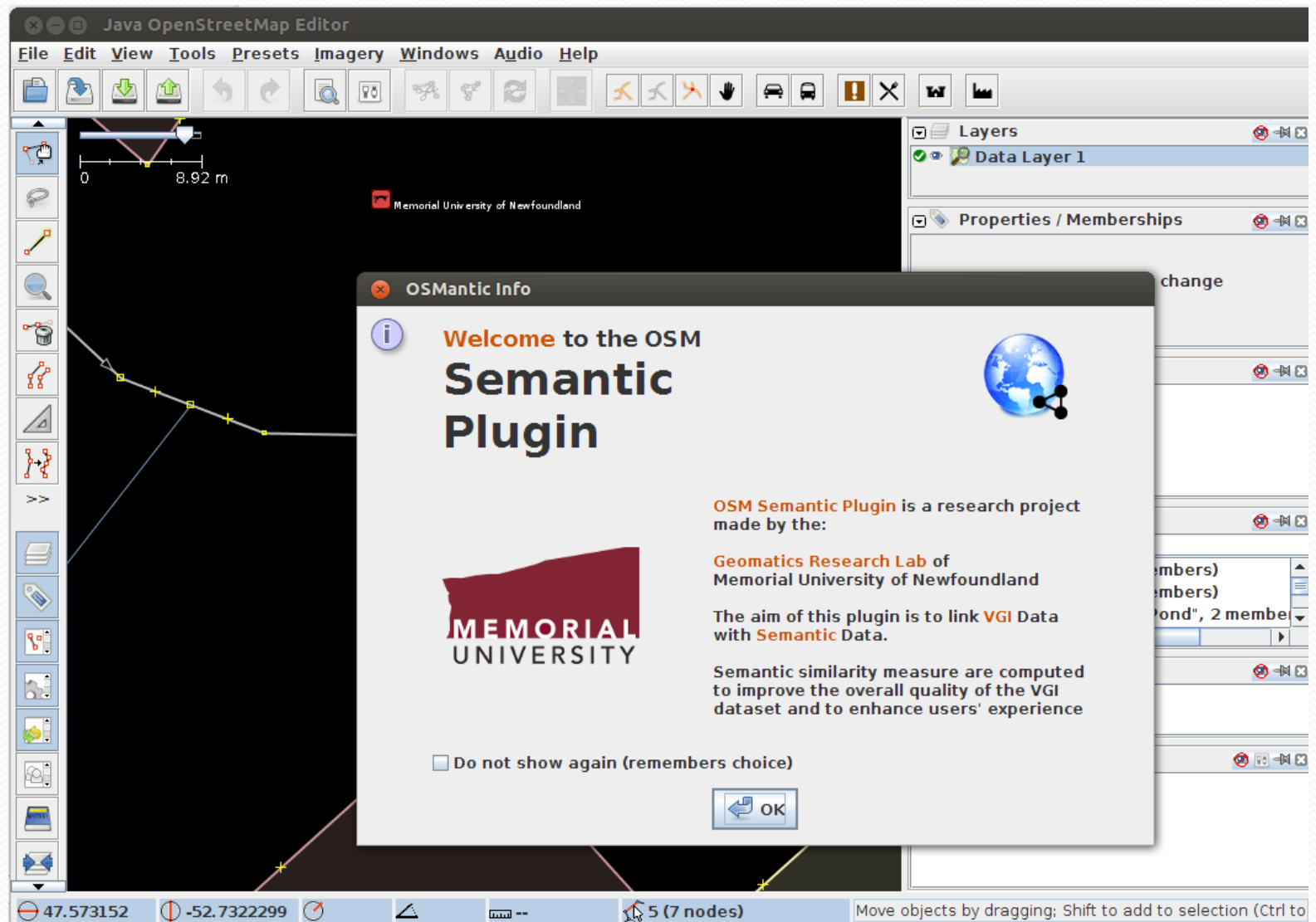
Quality of Volunteered Geographic Information (VGI)

- Contributors reliability
- Integration of authoritative and VGI data
- Quality of semantics

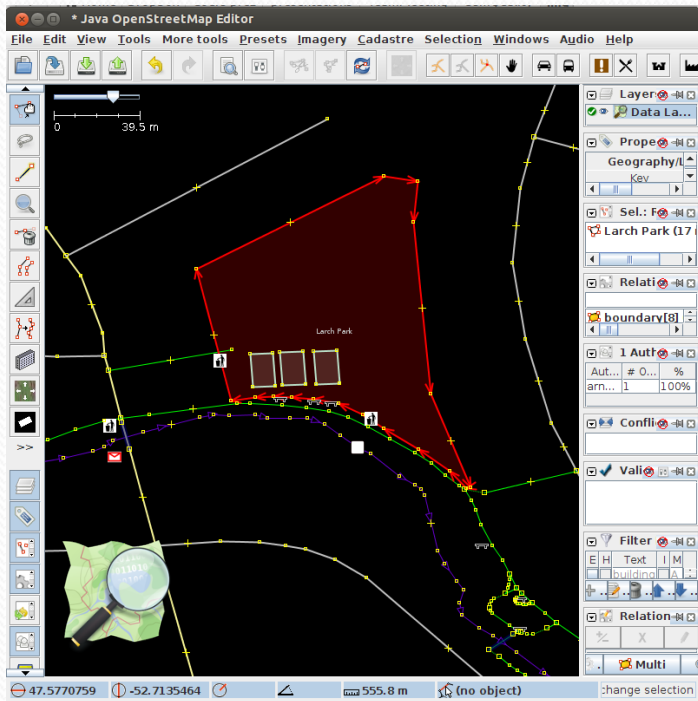


- Co-organized a **workshop on VGI and quality** at the 2012 GISciences conference (USA) with Budhu Bhaduri, Michael Goodchild and Muki Haklay
- Bégin, D., Devillers, R. and Roche, S. 2013. **Assessing volunteered geographic information (VGI) quality based on contributors' mapping behaviours**. *Proceedings of the 8th International Symposium on Spatial Data Quality (ISSDQ)*, Hong Kong, May 30-June 1.
- Martinez Ramos, R., Vandecasteele, A. and R., Devillers, R. 2013. **Semantic integration of authoritative and volunteered geographic information (VGI) using ontologies**. *Proceedings of the 16th AGILE conference on Geographic Information Science*, Leuven. Belgium, May 14-17th.

OSMantic Plugin – improving VGI semantic



OSMantic Plugin

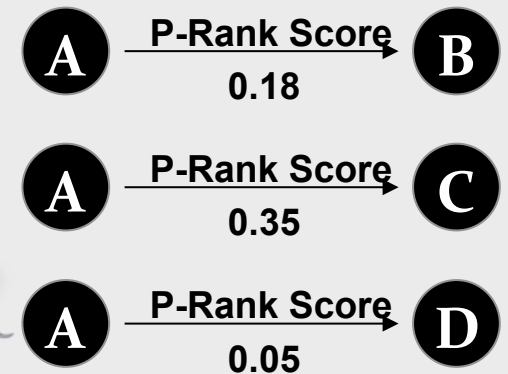


Semantic similarity

How similar are they ?



P-Rank scores



- Vandecasteele, A. and Devillers, R. 2013. **Improving volunteered geographic data quality using semantic similarity measurements.** *Proceedings of the 8th International Symposium on Spatial Data Quality (ISSDQ)*, Hong Kong, May 30-June 1.

OSMantic Plugin

The screenshot shows the Java OpenStreetMap Editor interface. The main map area displays a road network with a highlighted segment. The OSMantic plugin window is open, showing a table of tag suggestions with their similarity percentages. The right sidebar shows the Layers, Properties, and Relations panels.

Tag Name	Similarity %
Key:button_operated	17.76%
Key:traffic_signals:minimap	16.75%
Key:traffic_signals:floor_vibration	16.73%
Key:traffic_signals:sound	15.66%

Layers: Data Layer 1

Properties: 2

highway

Sel.: Rel.: 0 / 1

Relations: 10

Command Sta

1 Author

Author	# Obje...	%
ifd553	1	100%

47.5725163 -52.7249461 (no object) ction

Spatial data quality vs professional ethics

- Responsibilities of GIS professionals
- Ethical dissemination of geospatial data

**Geographic Information Ethics and GIScience
Special Session, AAG 2013, Los Angeles, CA**

More Info. on AAG Annual Meeting

Session at AAG 2009

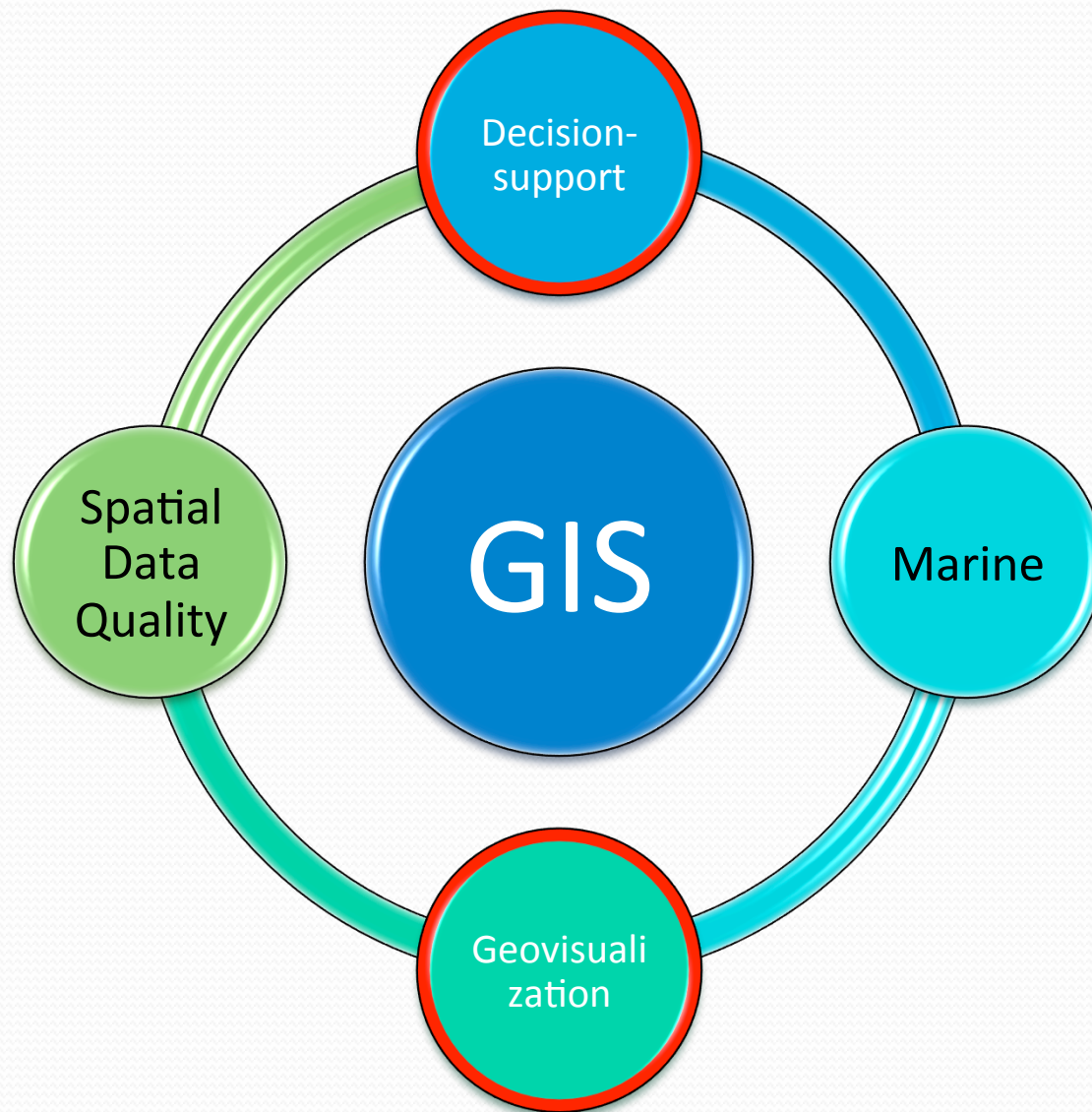
Session at AAG 2010

Session at AAG 2011

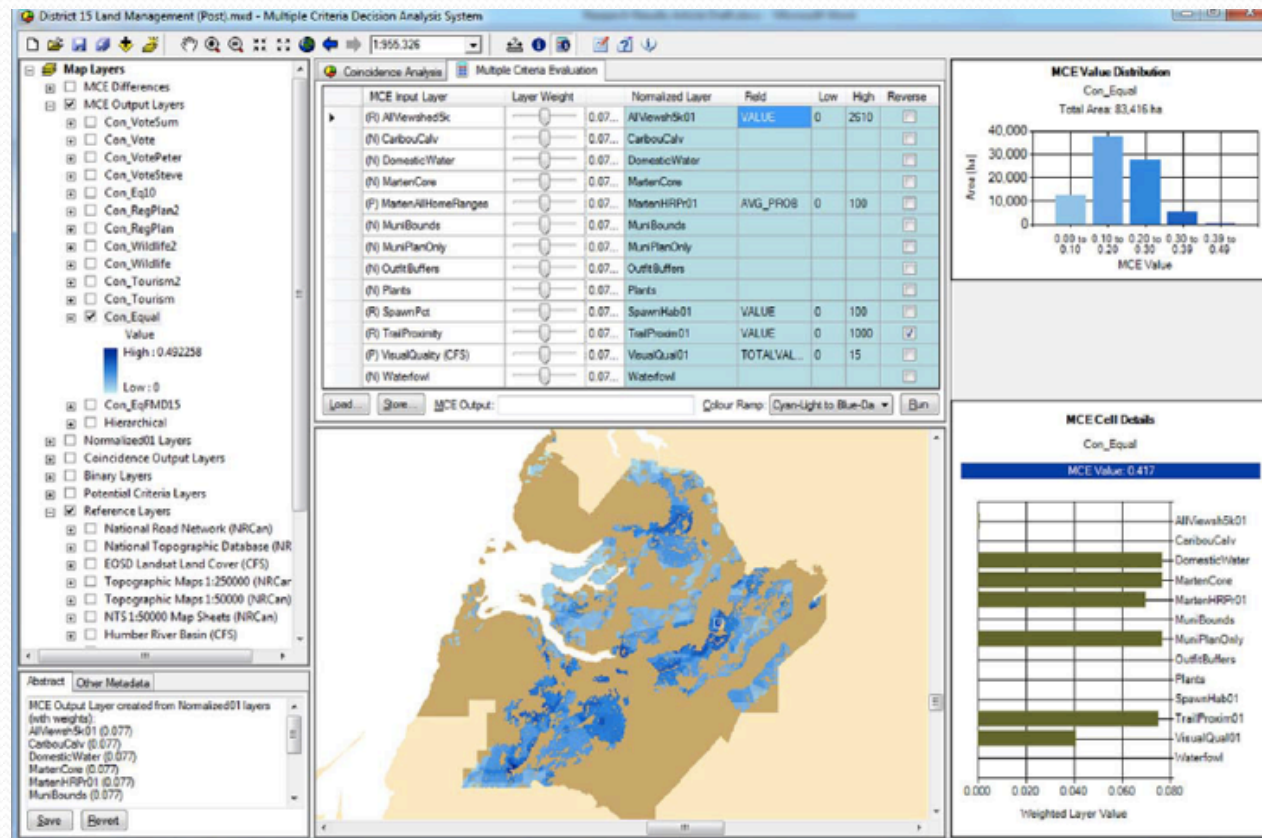
**Association of American Geographers (AAG)
Annual Meeting
April 9-13, 2013
Los Angeles, CA USA**

Organizers:
- Rodolphe Devillers (Memorial U. of Newfoundland)
- Francis Harvey (U. of Minnesota)
- Dawn Wright (Esri, Oregon State U.)

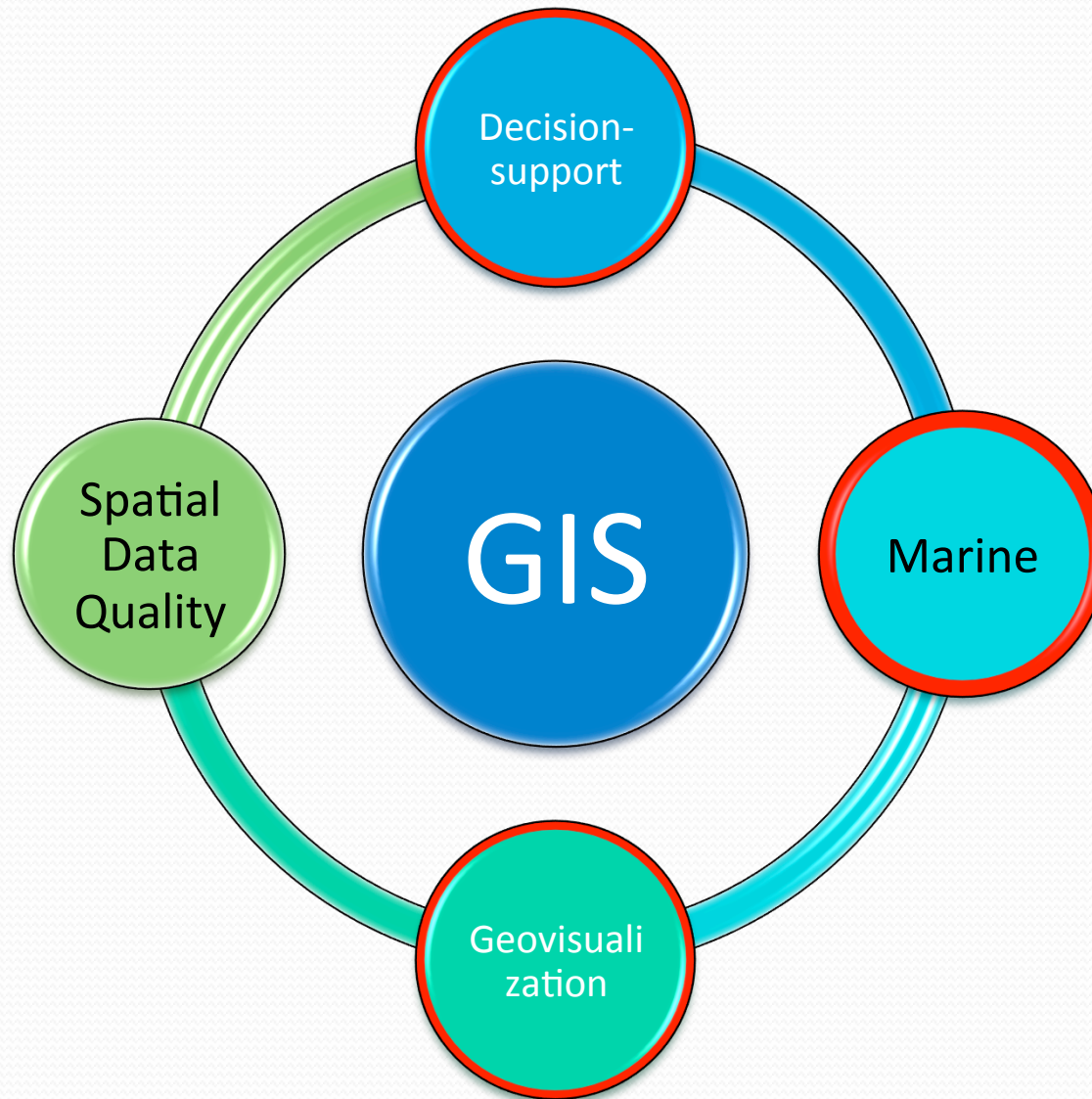
- Devillers, R., Gervais, M., Bédard, Y., Chandler, J., Coleman, D., Judge, E., Pouliot, J. and Scassa, T. 2012. **Sharing data is good, but are we concerned enough about public protection and ethical data dissemination?** *Proceedings of the GSDI 13 World Conference*, May 2012, Quebec City, Canada.
- Devillers, R., Gervais, M., Bédard, Y., Chandler, J., Coleman, D., Judge, E., Pouliot, J. and Scassa, T. 2012. **Responsible data sharing.** *SDI Magazine*, March 2012.
- Devillers, R. and Bédard, Y. 2010. **Responsible use of geospatial data - Have you thought recently of your responsibility for the consequences of your actions?** *GEOconnexions International Magazine*, June 2010, 30-32.
- Bédard, Y., Chandler, J., Devillers, R. and Gervais, M. 2009. **Professional Ethics, System Design Methods and Geospatial Data Quality.** *Geographic Information Ethics and GISciences Workshop. American Association of Geographers (AAG) annual meeting*, Las Vegas, USA, March 24th.



Combining geovisualization and multi-criteria decision analysis

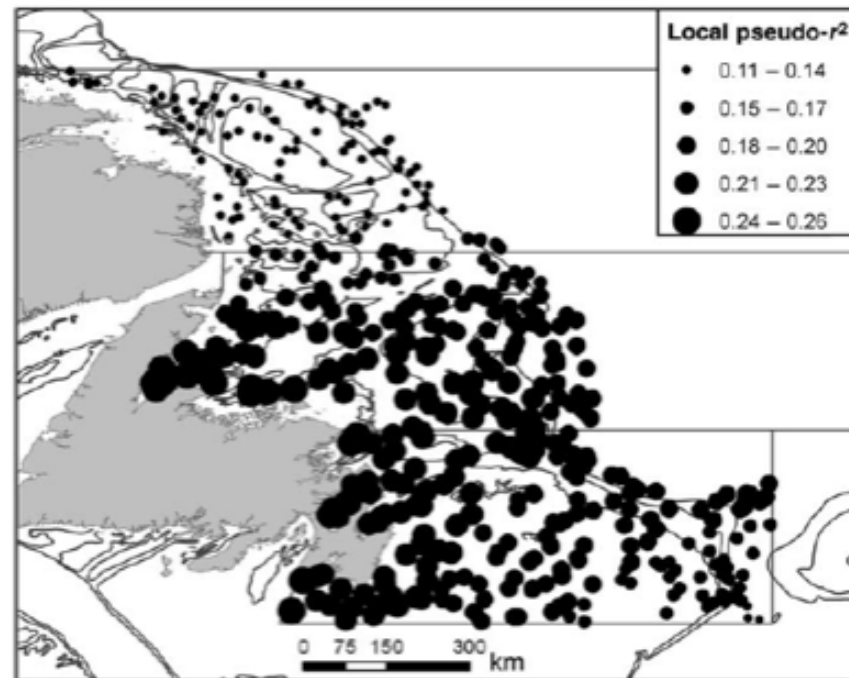


- Greene, R., , Devillers, R., Luther, J. and Eddy, B. 2011. GIS-based multiple-criteria decision analysis. *Geography Compass* 5/6: 412-432.
- Greene, R., Luther, J., Devillers, R. and Eddy, B. 2010. An approach to GIS-based multiple criteria decision analysis that integrates exploration and evaluation phases: Case study in a forest-dominated landscape. *Forest Ecology and Management*, 260: 2102-2114.



Exploring new methods to study marine environments

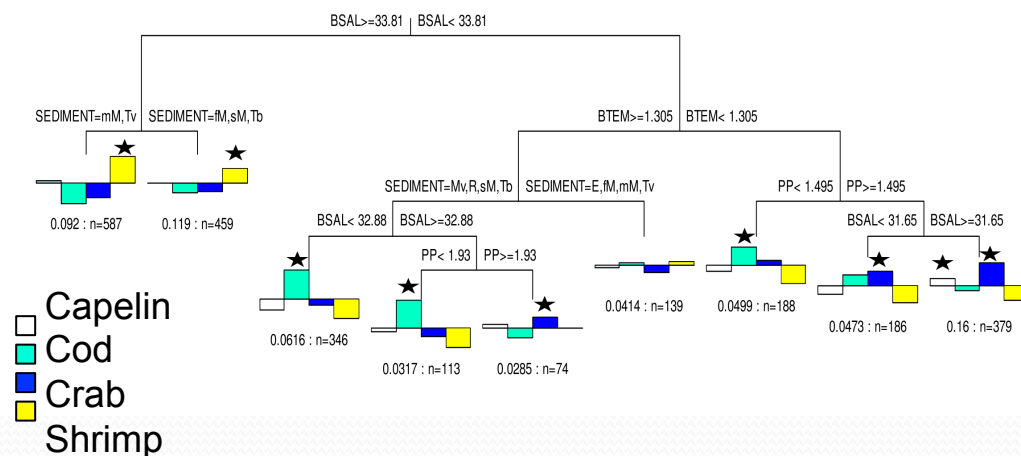
- Analysis of fisheries data in Eastern Canada vs environmental parameters using **Geographically Weighted Regressions (GWR)**



- Windle, M., Rose, G., Devillers, R. and Fortin, M.-J. 2012. **Spatio-temporal variations of invertebrate-cod-temperature relationships on the Newfoundland Shelf, 1995-2009.** *Marine Ecology Progress Series*. 469: 263-278.
- Windle, M., Rose, G., Devillers, R. and Fortin, M.-J. 2010. **Exploring spatial non-stationarity of fisheries survey data using geographically weighted regression (GWR): an example from the Northwest Atlantic.** *ICES Journal of Marine Science*, 67(1): 145-154.

Exploring new methods to study marine data

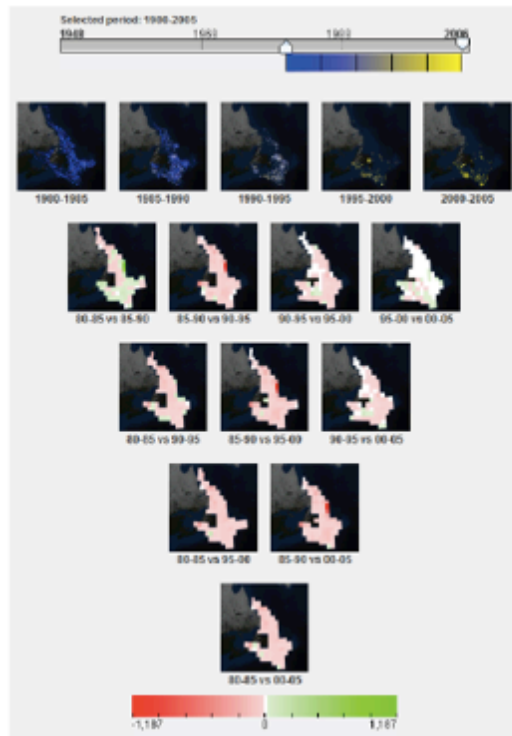
- Analysis of fish communities in Eastern Canada vs environmental parameters using **data mining** (Classification And Regression Trees – CART)



Year	Split Number				
	1	2	3	4	5
1991	Depth	Bottom	Salinity	Sediment	Type
1992	Bottom	Salinity	Sediment	Type	Bottom
1993	Bottom	Salinity	Sediment	Type	Bottom
1994	Bottom	Salinity	Sediment	Type	Bottom
1995	Bottom	Salinity	Sediment	Type	Bottom
1997	Bottom	Salinity	Sediment	Type	Bottom
1998	Bottom	Salinity	Sediment	Type	Bottom
1999	Bottom	Salinity	Sediment	Type	Bottom
2000	Bottom	Salinity	Sediment	Type	Bottom
2001	Bottom	Salinity	Sediment	Type	Bottom
2002	Bottom	Salinity	Sediment	Type	Bottom
2003	Bottom	Salinity	Sediment	Type	Bottom
2004	Bottom	Salinity	Sediment	Type	Bottom

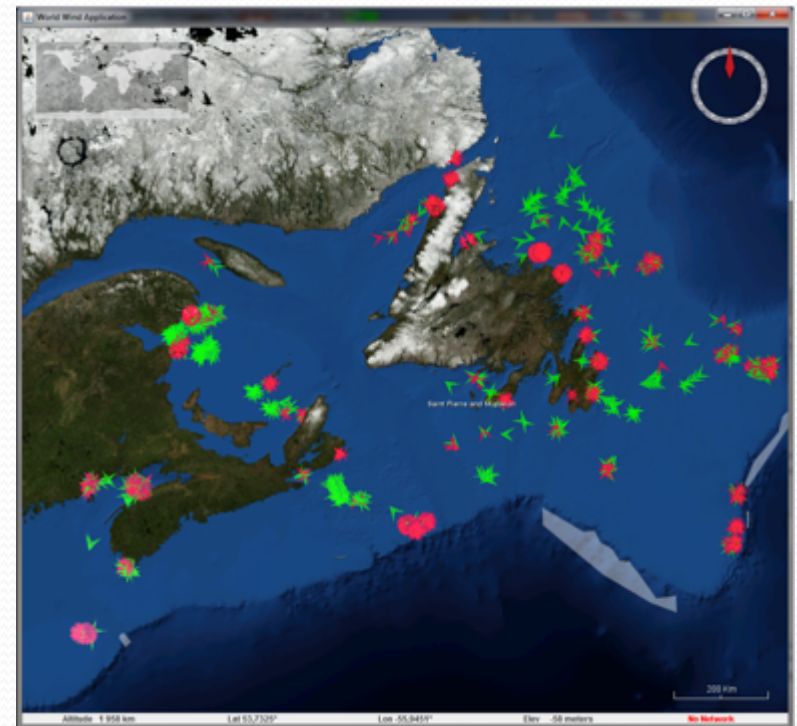
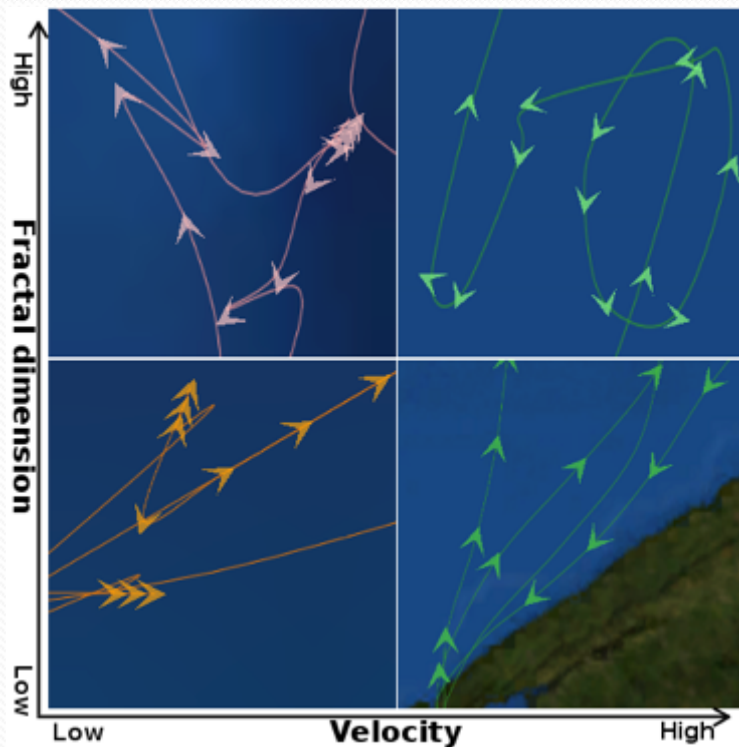
- Ruppert, J., Fortin, M.-J., Rose, G. and Devillers, R. 2010. **Environmental mediation of Atlantic cod on fish community composition: an application of MRT to fisheries ecosystems.** *Marine Ecology Progress Series*, 411: 189-201.
- Ruppert, J., Fortin, M.-J., Rose, G. and Devillers, R. 2009. **Atlantic cod distribution response to environmental variability in the Northern Gulf of St. Lawrence.** *Canadian Journal of Fisheries and Aquatic Sciences*, 66(6): 909-918.

Fisheries geovisualization



- Hoeber, O., Wilson, G., Harding, S., Enguehard, R. and Devillers, R. 2011. **Exploring geo-temporal differences using GTDiff**. PacificViz Conference 2011, Hong Kong, March 1-4.
- Hoeber, O., Wilson, G., Harding, S., Enguehard, R. and Devillers, R. 2010. **Visually representing geo-temporal differences**. *IEEE Conference on Visual Analytics Science and Technology*, Salt Lake City, USA, October 2010.

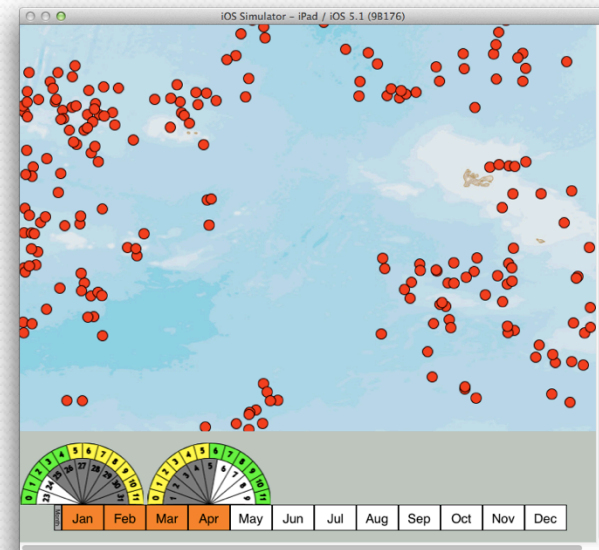
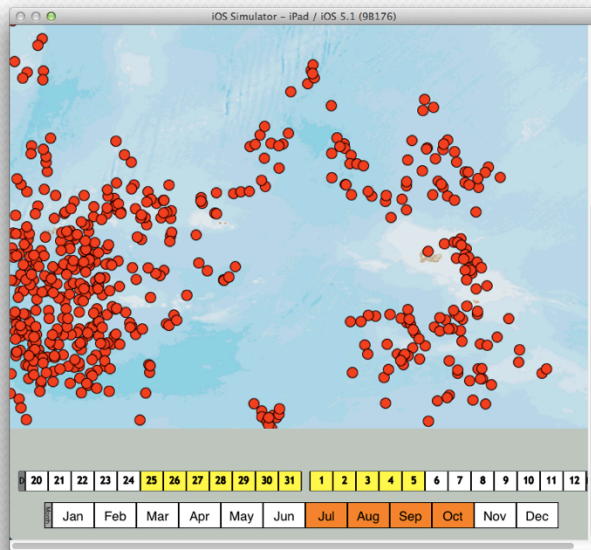
Extracting knowledge from movement data – fishing vessels movement



- Journal papers: Enguehard et al. 2012 (*Information Visualization*), Enguehard et al. 2012 (*Journal of Coastal Conservation*) & Enguehard et al. (*in prep*)
- Conference papers: Enguehard et al. 2011 (*GeoViz'11 and MAD'11*), 2012 (*AGILE conference*)

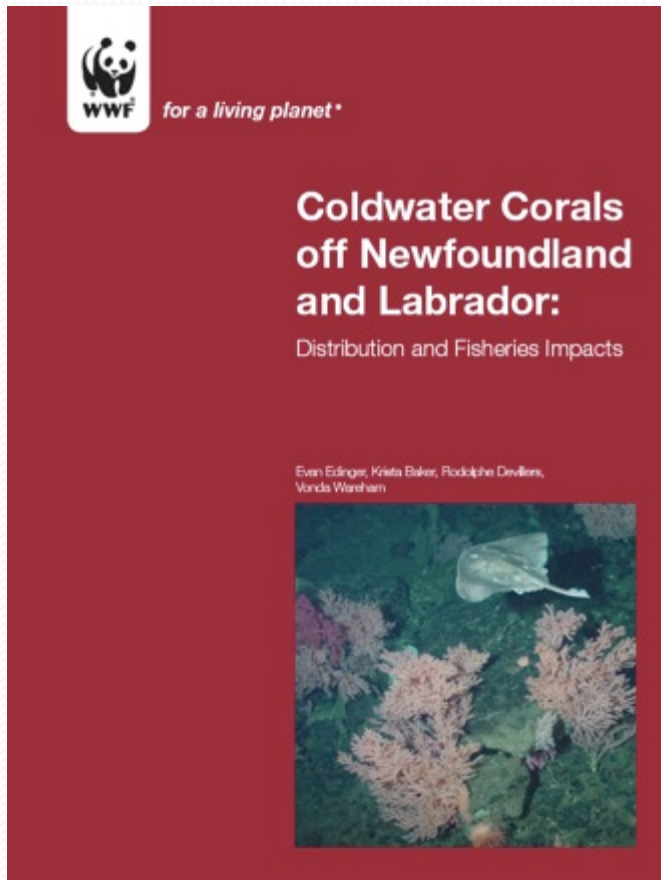
Designing navigation tools to better explore spatio-temporal data

- Temporal zoom/pan tools for multi-touch environments

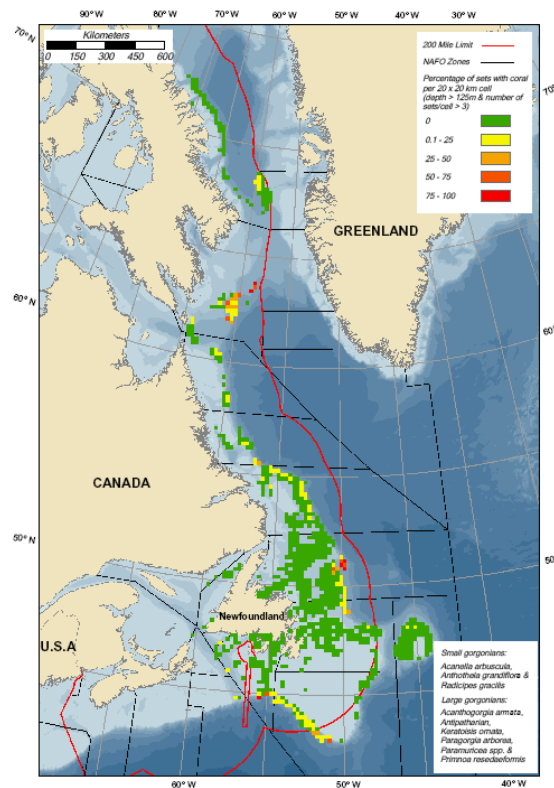


- Lee, C., Devillers, R. and Hoerber, O. (2014). **Navigating spatio-temporal data with temporal zoom and pan in a multi-touch environment.** *International Journal of Geographical Information Science*.
- Lee, C., Devillers, R. and Hoerber, O. 2012. **Interactive temporal zoom and pan within a multi-touch geo-visual analytics environment.** *GIScience'12 workshop "Geovisual analytics - Time to focus on time"*, Columbus, OH, USA, September 18, 2012.

Using GIS to study cold-water corals

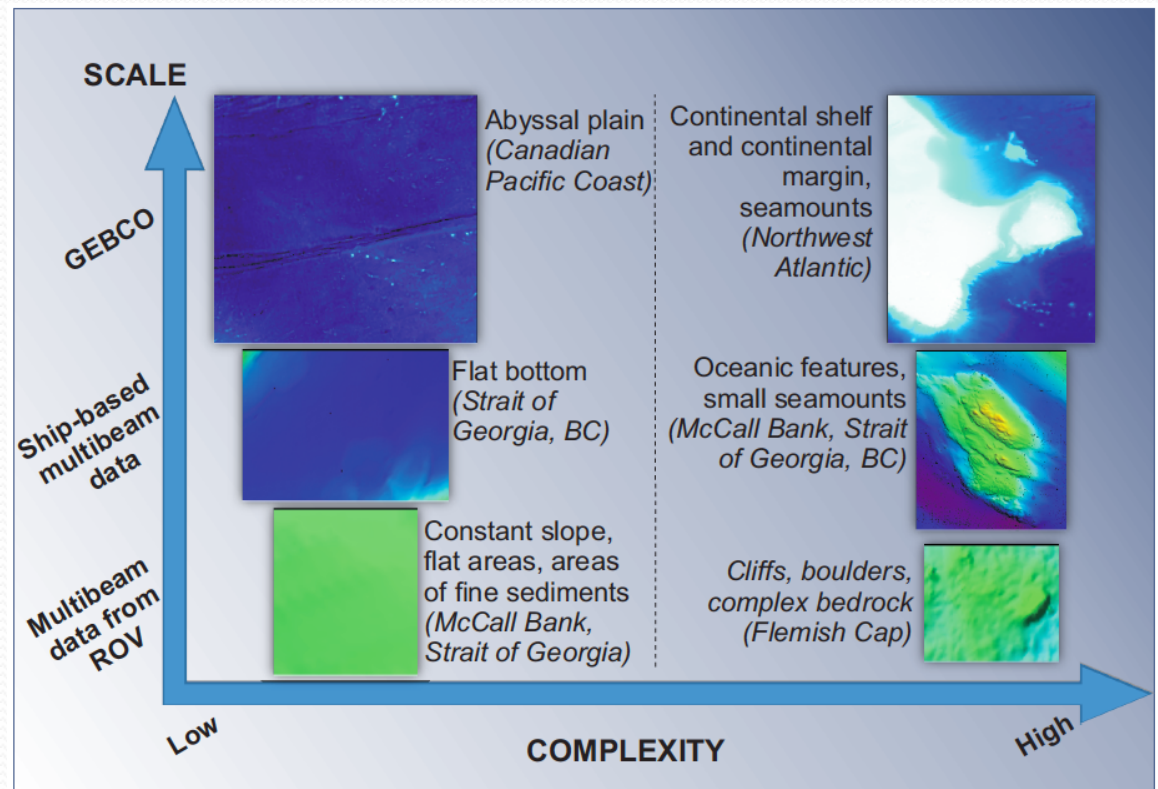


Percentage of sets containing large or small gorgonians
(All fisheries, All gear types, 2004 & 2005)



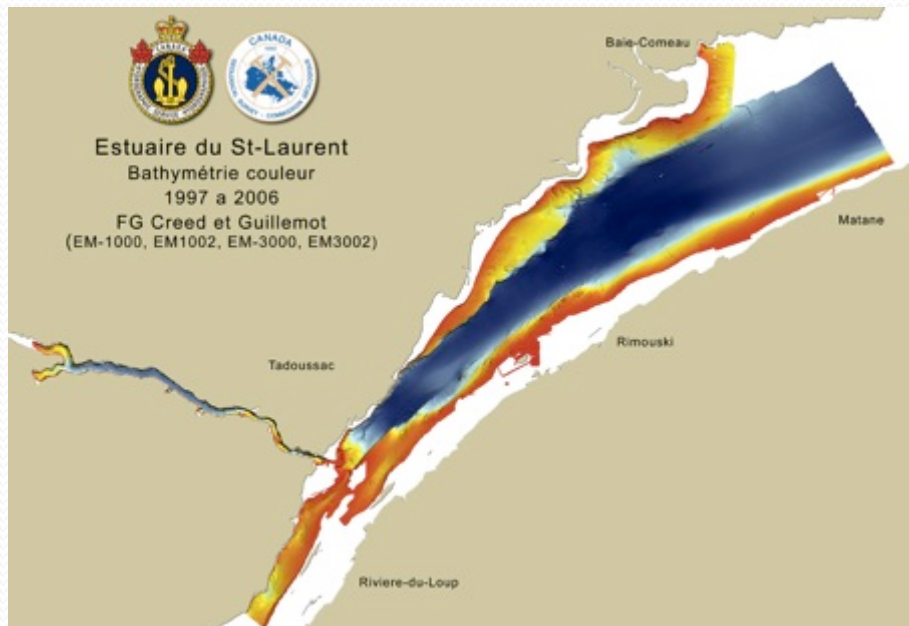
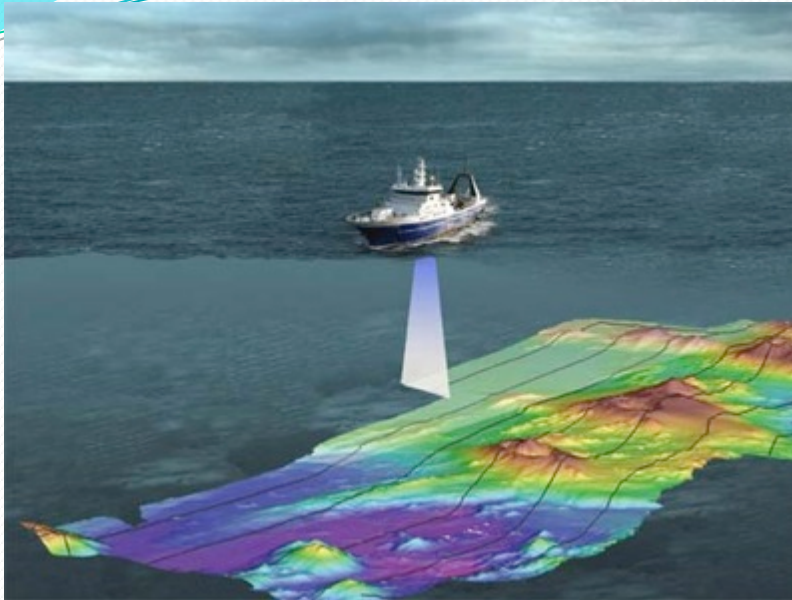
- Edinger, E., Baker, K., Devillers, R. and Wareham, V. 2007. **Coldwater corals off Newfoundland and Labrador - Distribution and fisheries impacts.** World Wildlife Fund (WWF) report, 41p.

Marine geomorphometry: Cold-water corals vs seabed

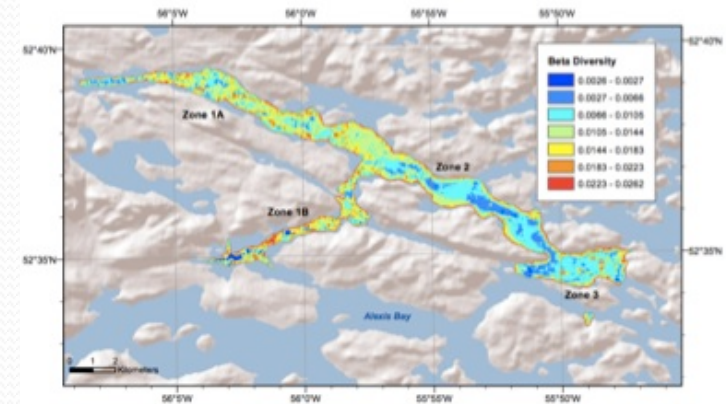
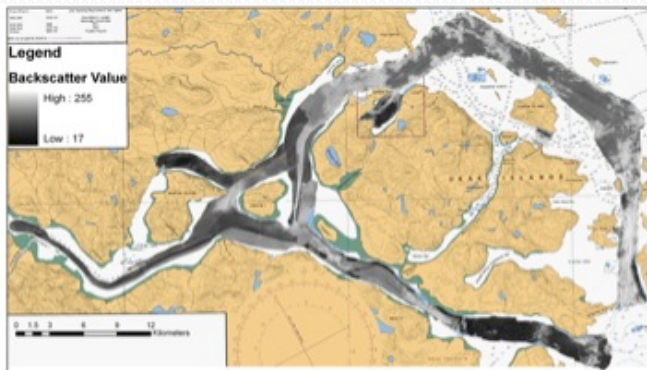
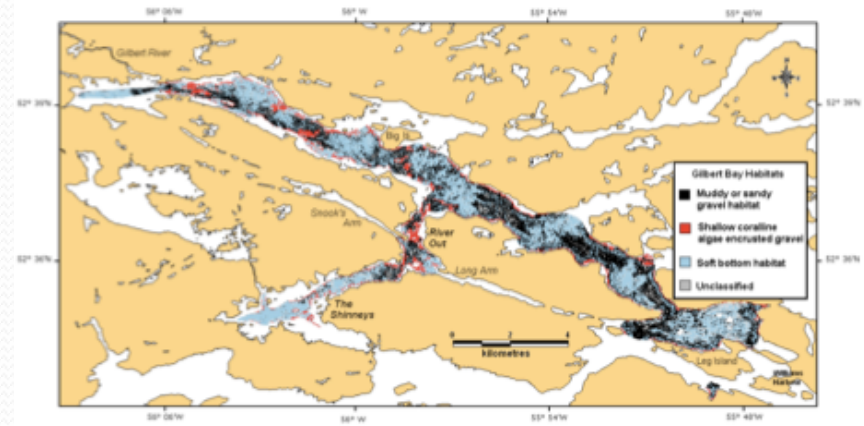
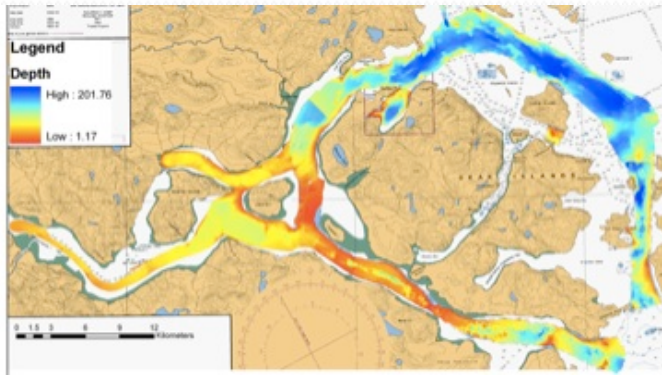


- Devillers, R., Edinger, E., Lecours, V. and Jones, K. 2012. **The role of scale in understanding cold-water corals habitats.** *12th International Coral Reef Symposium (ICRS'12)*, Cairns, Australia, 9-13 July.

Mapping the seabed – acoustic remote sensing and hydrography



Mapping Benthic Habitats



- Copeland, A., Edinger, E., Devillers, R., Bell, T., LeBlanc, P., Wroblewski, J. 2013. **Marine habitat mapping in support of Marine Protected Area management in a subarctic fjord: Gilbert Bay, Labrador, Canada.** *Journal of Coastal Conservation: Planning and Management*.
- Copeland, A., Edinger, E., Bell, T., LeBlanc, P., Wroblewski, J. and Devillers, R. 2012. **Geomorphic features and benthic habitats of a sub-arctic fjord: Gilbert Bay, Southern Labrador, Canada.** In: *GeoHAB Atlas of Seafloor Geomorphic Features and Benthic Habitats* (P.T. Harris & E.K. Baker, eds), pp. 309-328.

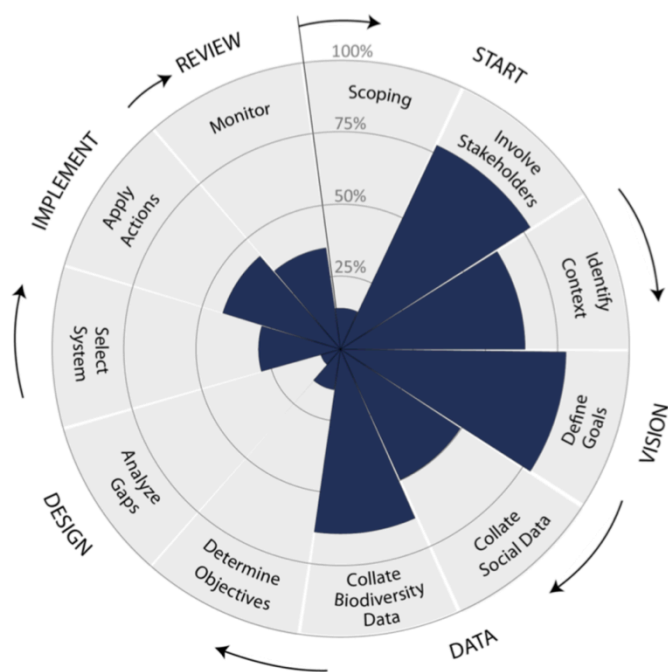
Mapping Benthic Habitats

- Habitat mapping from ROV and AUV platforms



Geospatial tools for better Marine Protected Areas design

- Encouraging the use of Systematic Conservation Planning in high-seas

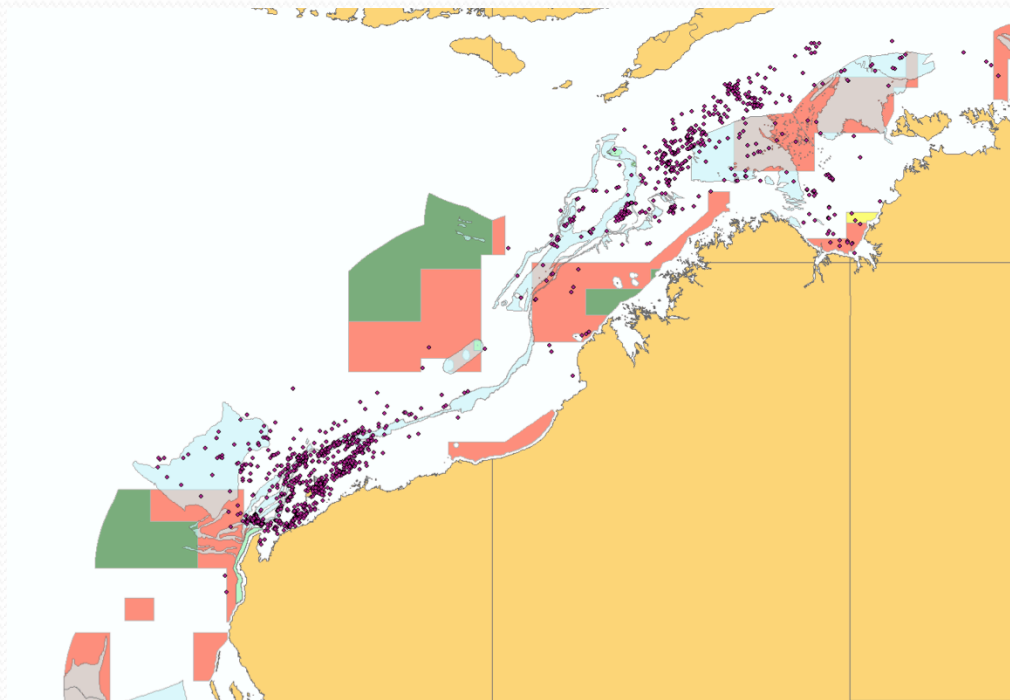


Credit: CSIRO

- Ban, N.C., Maxwell, S.M., Dunn, D.C., Hobday, A.J., Bax, N.J., Ardron, J.A., Gjerde, K.M., Game, E.T., Devillers, R., Kaplan, D.M., Dunstan, P.K., Halpin, P.N., and Pressey, R.L. (in press) **Better integration of sectoral planning and management approaches for the interlinked ecology of the open oceans.** *Marine Policy*.
- Ban, N.C., Bax, N.J., Gjerde, K.M., Devillers, R., Dunn, D.C., Dunstan, P.K., Hobday, A.J., Maxwell, S.M., Kaplan, D.M., Pressey, R.L., Ardron, J.A., Game, E.T. and Halpin, P.A. (in press) **Systematic Conservation Planning: a better recipe for managing the high seas for biodiversity conservation and sustainable use.** *Conservation Letters*.

Geospatial tools for better Marine Protected Areas design

Studying global MPA distribution vs human extractive activities

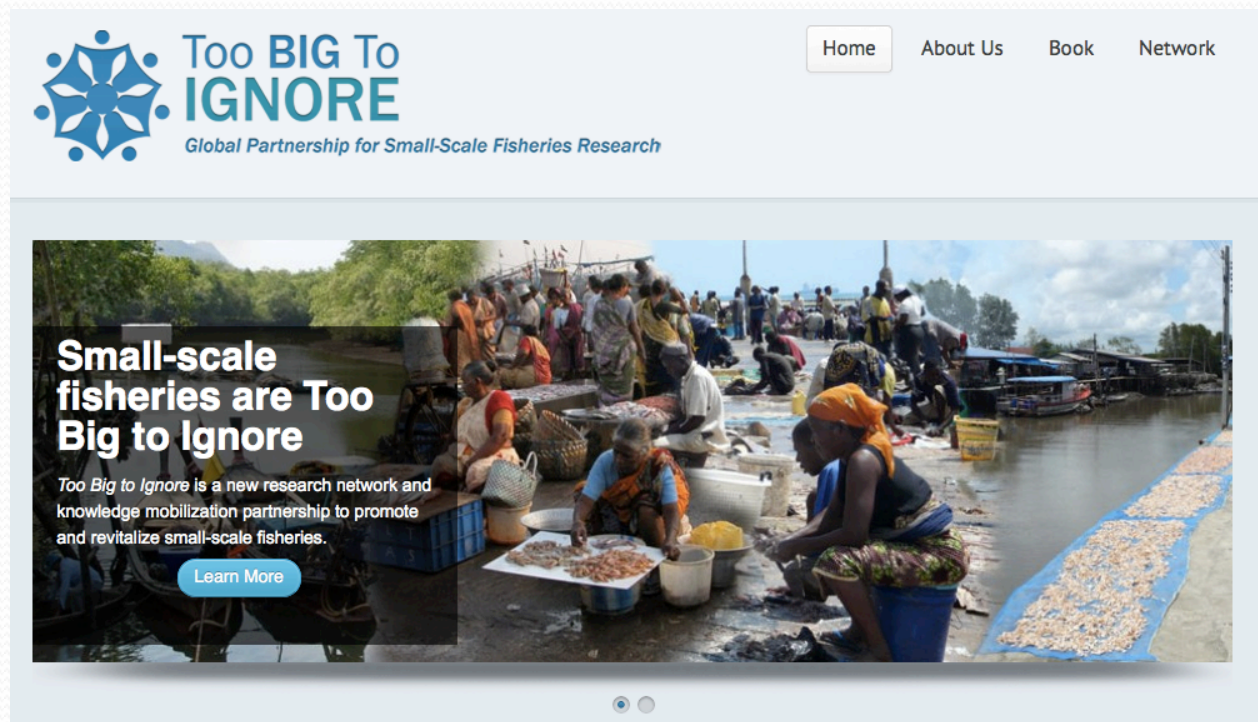


Proposed MPAs in NW Australia

- Devillers, R., Pressey, B., Grech, A., Kittinger, J., Graham, E., Ward, T. and Watson, R. (in press). **Reinventing residual reserves in the sea: are we favouring ease of establishment over need for protection?** *Aquatic Conservation: Marine and Freshwater Ecosystems*.

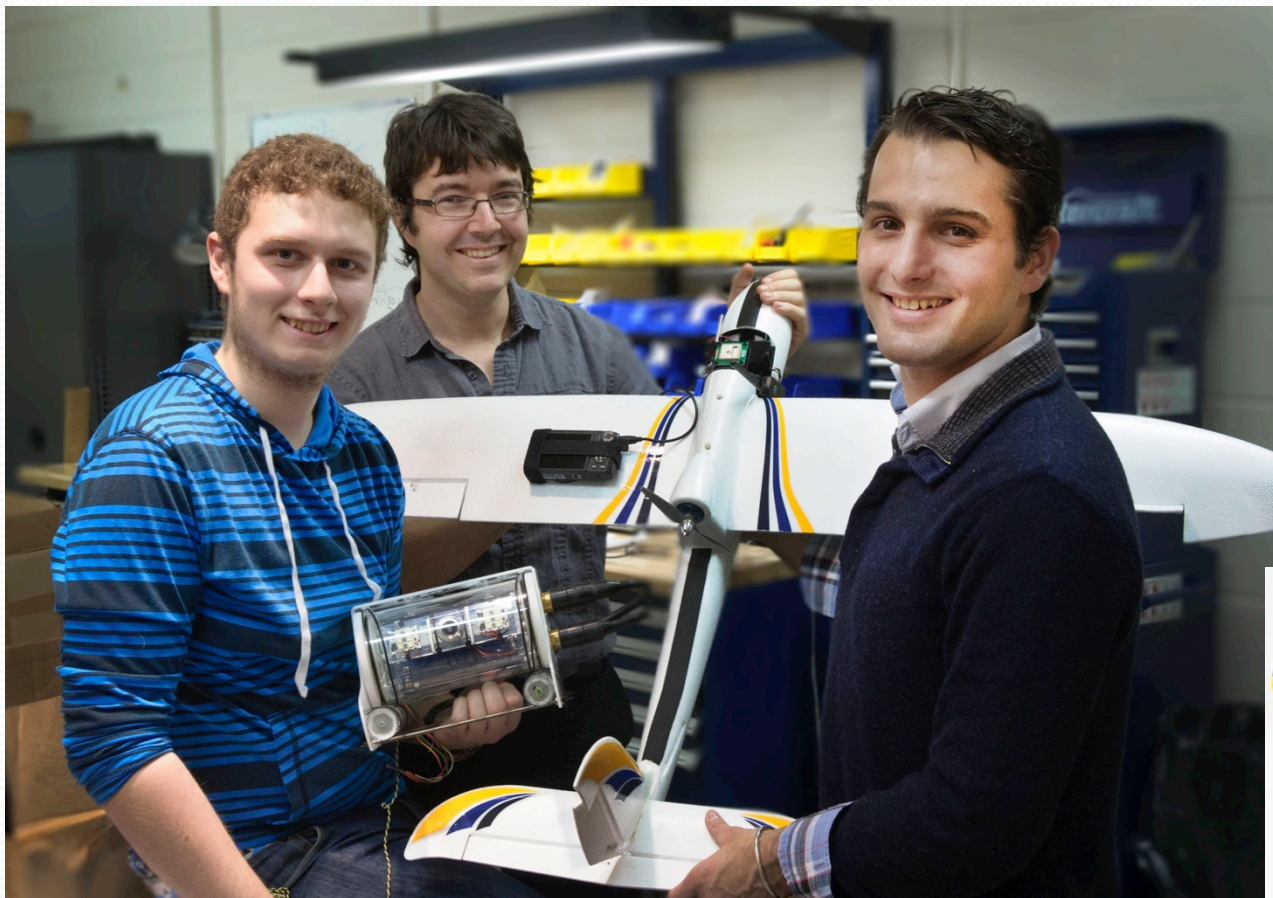
Even helping social scientists!

- Information System on Small-scale fisheries (ISSF)



- Chuenpagdee, R., Davis, R., Korneski, K. and Devillers, R. 2011. **Reconceptualizing Ecosystem Complexity: A New Emphasis.** *MARE 2011 Conference - People and the Sea VI: Bridging Science and Policy for Sustainable Coasts and Seas.* Amsterdam, The Netherlands, July 6-9th.

Coming next: Crowdsourcing imagery using UAVs/ROVs



Merci / Thank you



rdeville@mun.ca

More information:
<http://www.marinegis.com>